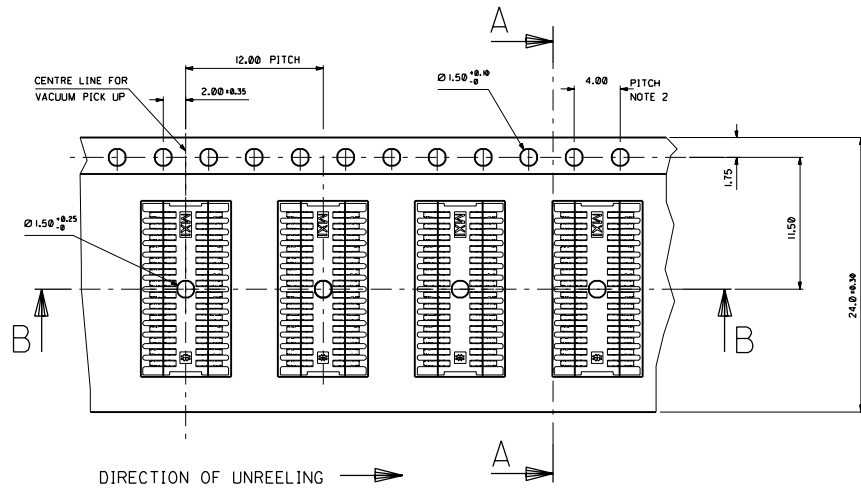
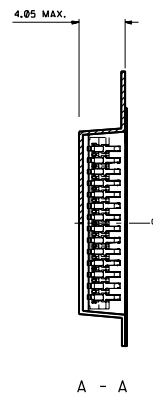
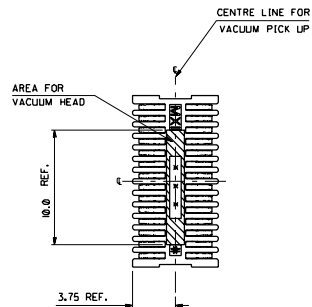
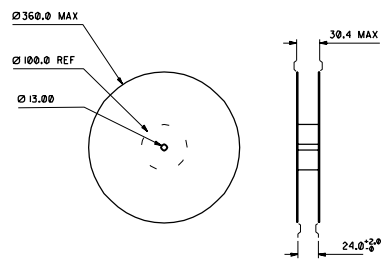


# COMPONENT PICK UP DETAIL

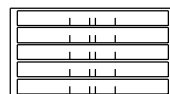


# REFERENCE ONLY



# REEL DIMENSIONS DO NOT SCALE

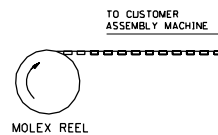
(1600) PIECES / REEL - SUBJECT TO CHANGE  
(5) REELS / CARDBOARD BOX  
(8000) PIECES / CARDBOARD BOX



B - B

# NOTES:

- 1) MATERIAL :  
CARRIER TAPE : VOLUME CONDUCTIVE POLYSTYRENE , 0.40 REF THICK , BLACK  
COVER TAPE : COLD SEAL POLYESTER , 0.06 REF THICK , TRANSPARENT
- 2) PITCH TOLERANCE OVER ANY 10 PITCHES +0.20
- 3) PEEL FORCE OF THE COVER TAPE IS 0.1N TO 1.0N  
AT A MAXIMUM PEEL SPEED OF 300/min. +10%
- 4) PACKAGING SPEC. TBA.
- 5) REFERENCE TO IEC 286-3 EXCEPT WHERE NOTED



MOLEX REEL

ORIGINAL RELEASE EC NO. E2000-0010 DRAWN: EX CHK: APP: A	QUALITY SYMBOLS MAJOR CRITICAL C	GENERAL TOLERANCES* (UNLESS SPECIFIED)	SCALE		DESIGN UNITS	THIRD ANGLE PROJECTION	DIMENSIONS:		SHT	REV	
			mm	inch	mm		inch	mm			inch
DRAWN BY & DATE EKELLY 99/04/15			CHECKED BY & DATE MKEANE 99/04/15			APPROVED BY & DATE MWILHITE 99/04/15			CAD FILENAME		
4 PLACES ±0.1			3 PLACES ±0.1			2 PLACES ±0.1			1 PLACE ±0.2		
ANGULAR: ±1/2°											
DRAFT WHERE APPLICABLE MUST REMAIN WITHIN DIMENSIONS			THIS DRAWING CONTAINS INFORMATION THAT IS PROPRIETARY TO MOLEX INCORPORATED AND SHOULD NOT BE USED WITHOUT WRITTEN PERMISSION.								
TITLE: BLISTER PACKAGING FOR 28 CCT B/B CONNECTOR						MATERIAL NO. 91396-0002		DRAWING NO. SD-91396-004		SHEET NO. 1 OF 1	

PRE-RELEASE  
FOR REFERENCE  
ONLY